

Neighborhood Day Camps

Camp is for girls entering Kindergarten through 12th grade in Fall 2010



Neff's Camp 2010

July 5-9 ♦ 9:00 am-3:30 pm

Neff's Union Church Grove,

Rt. 873, Neffs, North Whitehall Township

Neff's Union Church has a multitude of opportunities for summer fun. The site includes a beautiful, shaded outdoor grove and stage area, a wooded area for hiking and nature exploration, and an open field for archery.

"S'More Camping"

Chocolate and camping make a winning combination! Campers will enjoy Girl Scouts' favorite treat and hone their camping skills, including preparations, tenting, fire building, and cooking techniques. Girls work toward camping badges and get a t-shirt to decorate and a theme patch.

Cost: \$100.00



Contact: Karen Zimmerman
610-760-1887
neffsdaycamp@entermail.net



Girl Scouts
of Eastern Pennsylvania

Blue Mountain Camp 2010

July 26-30 ♦ 9:00 am-3:30 pm

Indian Trail Park, Rt. 248, Lehigh Township

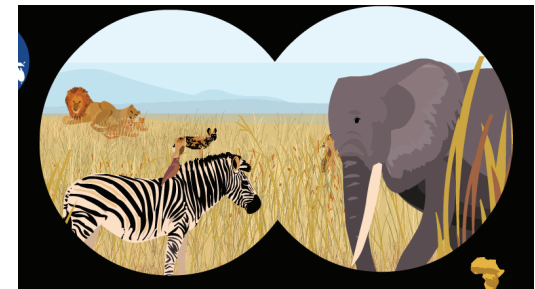
Indian Trail Park in Lehigh Township is the home for Blue Mountain Day Camp. This site features lots of shade, three large pavilions, and plenty of open space for archery and field games. The creek and nature trails add to its charm.



"African Safari"

Campers learn about endangered animals from the savanna; practice dances and make a mask for the weekend production of "The Lion King;" and help create the Camp's own endangered species badge. Girls receive a t-shirt to decorate and a theme patch.

Cost: \$100.00



Contact: Karen Zimmerman
610-760-1887
bluemtdaycamp@entermail.net

Program Aide Training and volunteer opportunities are available for girls in grades 7-12 — Contact Karen Zimmerman for more informa-

Want to help? Volunteers (age 18 and older) will receive training, half price for daughters, on-site childcare for siblings, plus a \$12/day

For registration information, go to www.gsep.org and click on Camps, then click on Neighborhood Day Camps